



SINGAPORE COUNTRY REPORT 2022

Prepared by
NATSTEEL HOLDINGS PTE LTD

Date 15Nov 2022



Contents

- 1 OVERVIEW OF ENVIRONMENT & SAFETY
- 2 ECONOMY RE-OPENING AFTER COVID VS WSH PERFORMANCE
- 3 REGULATORY CHANGES
- 4 END

SINGAPORE WSH 2028 – TOWARDS VISION ZERO

WSH 2028 in a nutshell



About WSH 2028

A Healthy Workforce in Safe Workplaces;
A Country Renowned for Best Practices in
Workplace Safety & Health



Table 2: Success indicators of a sustained reduction in workplace injury rates

Success indicators	Current ³ (2016-18 average)	Desired (Three-year average by 2028)
Workplace fatal injury rate per 100,000 workers	1.4	<1.0
Workplace major injury rate per 100,000 workers	17.2	<12.0

Singapore's WSH ranking among OECD* countries



Singapore has made significant progress in our WSH outcomes.

Our workplace fatal injury rate declined by more than 75% over the past 14 years: from 4.9 per 100,000 workers in 2004 to 1.2 per 100,000 workers in 2018 – the lowest level recorded in history.

This was the result of concerted tripartite efforts, guided by the WSH 2015 and WSH 2018 national WSH strategies.

We aim to do better. WSH 2028 will guide our efforts in the next decade.

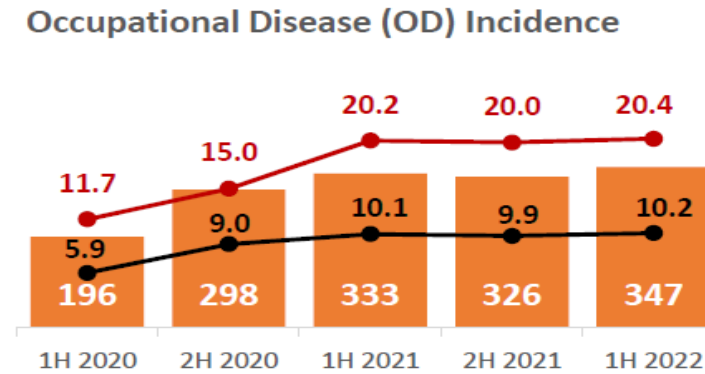
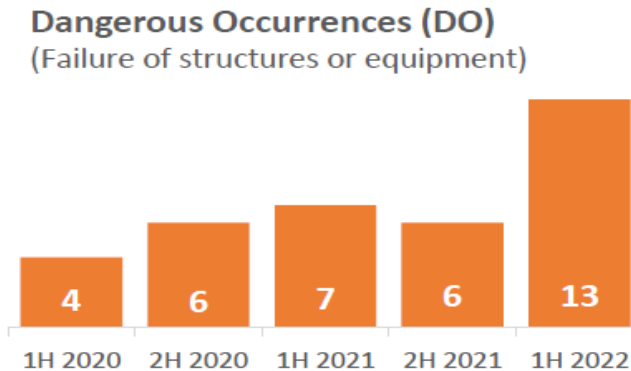
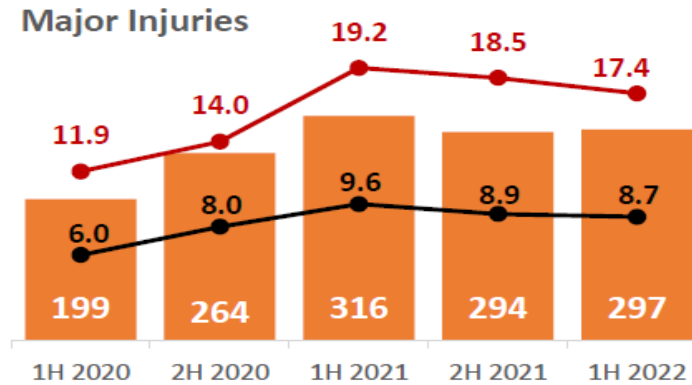
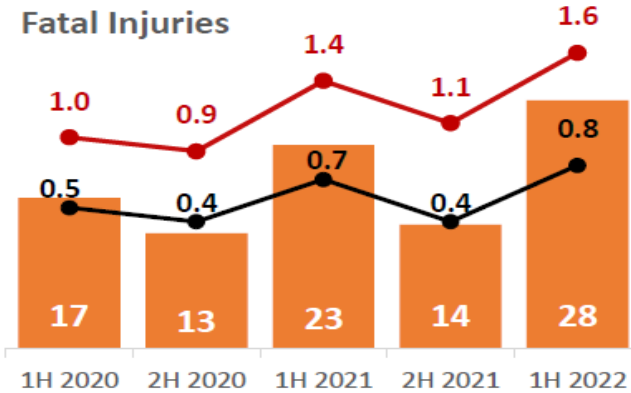
*Organisation for Economic Co-operation and Development

SINGAPORE NATIONAL WSH STATISTICS

January – June 2022

SINGAPORE WORKPLACE SAFETY & HEALTH REPORT

Higher rate for workplace fatalities in 1H 2022 despite decline in overall injuries.



No. of Injuries/OD/DO

6-month rate

Annualised rate

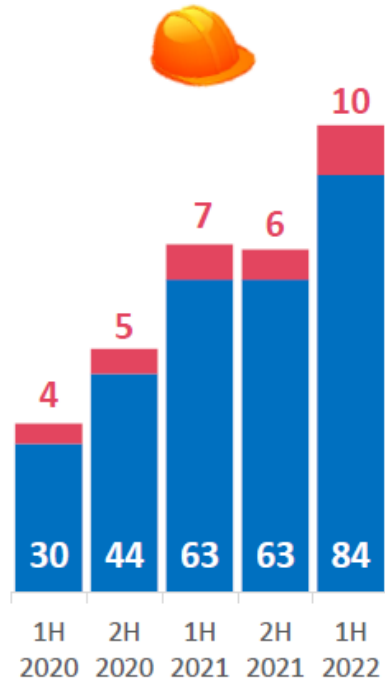
All rates are per 100,000 workers

SINGAPORE NATIONAL WSH STATISTICS

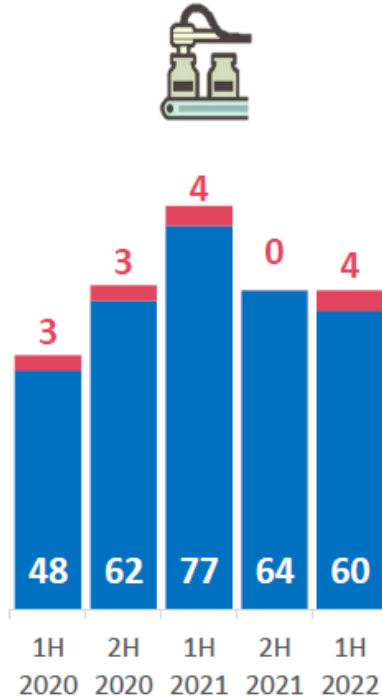
Construction overtook Manufacturing as leading sector.
Slips, Trips & Falls remained the top cause of major injuries in 1H 2022.

Leading Sectors / Industries

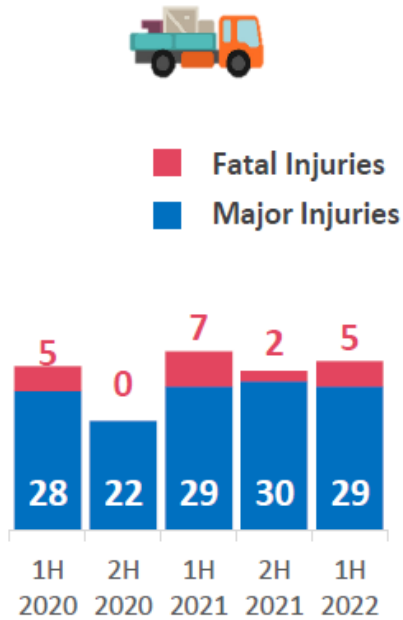
1st Construction



2nd Manufacturing



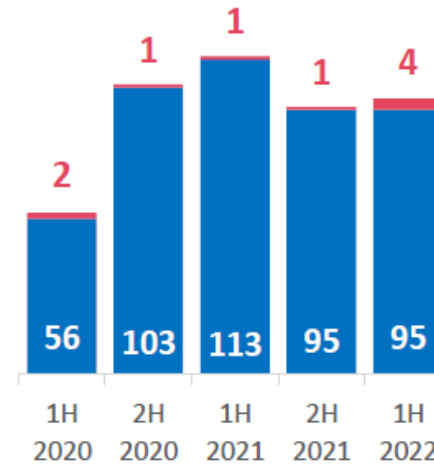
3rd Transportation & Storage



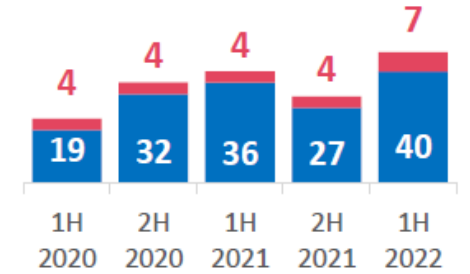
■ Fatal Injuries
■ Major Injuries

Leading Causes

1st Slips, Trips & Falls



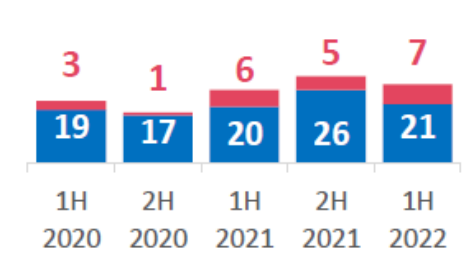
2nd Falls from Height



3rd Machinery Incidents



4th Vehicular Incidents



SINGAPORE GREEN PLAN 2030 LAID ON 5 PILLARS



Climate change is a global challenge, and Singapore is taking firm actions to do our part to build a sustainable future.

The Singapore Green Plan 2030 is a national sustainability movement with ambitious and concrete targets, which builds on our existing climate mitigation and adaptation measures.

It is a living plan which will evolve as we work with Singaporeans and partners from all sectors to co-create solutions for sustainability.

Our collective action will make a difference. Let's build a greener and more liveable home together.

1. City in Nature

A Green, Liveable and Sustainable Home for Singaporeans

- ✓ Add 1000ha of green spaces and 160km of park connectors
- ✓ Every household will live within a 10-min walk from a park
- ✓ Plant 1 million more trees across Singapore by 2030

2. Sustainable Living

Strengthen Green Efforts in Schools

- ✓ Work towards two-thirds reduction of net carbon emissions from schools sector by 2030
- ✓ At least 20% of schools to be carbon neutral by 2030

Green Commutes

- ✓ 75% of all trips to be on mass public transport by 2030, up from 64% today
- ✓ Triple cycling path network to 1,320km by 2030 from 460km in 2020

Green Citizenry: Less waste and consumption

- ✓ Reduce amount of waste to landfill per capita per day by 20% by 2026, with the goal of reaching 30% by 2030
- ✓ Encourage water conservation and water efficient practices for households and industries



SINGAPORE GREEN PLAN 2030 LAID ON 5 PILLARS

3. Energy Reset

Cleaner-energy Vehicles

- Require all newly-registered cars to be of cleaner-energy models from 2030
- Expand network of electric vehicle charging points to 60,000 by 2030

Sustainable Fuels

- Promote sustainable fuels for international trade and travel

Greener Infrastructure & Buildings

- Raise sustainability standards of our buildings through the next edition of the Singapore Green Building Masterplan

Sustainable Towns & Districts

- HDB Green Towns Programme to reduce energy consumption in HDB towns by 15% by 2030

Green Energy

- Quadruple solar energy deployment by 2025
- Green Singapore's electricity supply by tapping on cleaner electricity imports

4. Green Economy

Sustainability as New Engine of Jobs and Growth

- New Enterprise Sustainability Programme to help local enterprises adopt sustainability practices
- Develop Singapore as a carbon services hub, and as a leading centre for green finance in Asia and globally
- Develop Jurong Island to be a sustainable energy and chemicals park

New Investments to be Carbon and Energy Efficient

- Seek out new investments that are among the best-in-class in carbon/energy efficiency

5. Resilient Future

Safeguarding our Coastlines against Rising Sea Levels

- S\$5b dedicated to coastal and drainage flood protection measures
- Complete engineering design & implementation plans for coastal protection measures at East Coast, Lim Chu Kang, Sungei Kadut, & Jurong Island by 2030

Safeguarding Food Security

- Produce 30% of our nutritional needs by 2030 by growing our agri-food industry through key strategies, including developing land and sea space

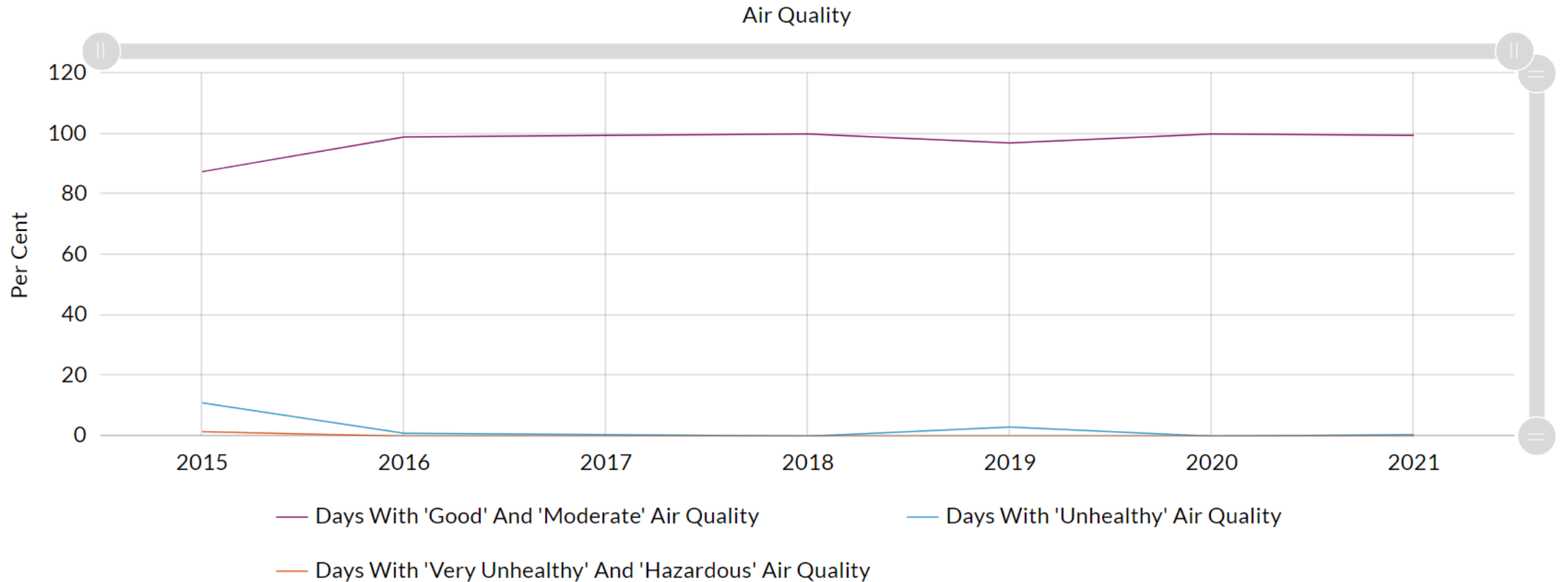
Keeping Singapore Cool

- Moderate the rise in urban heat with cool paint and by increasing greenery



www.Green

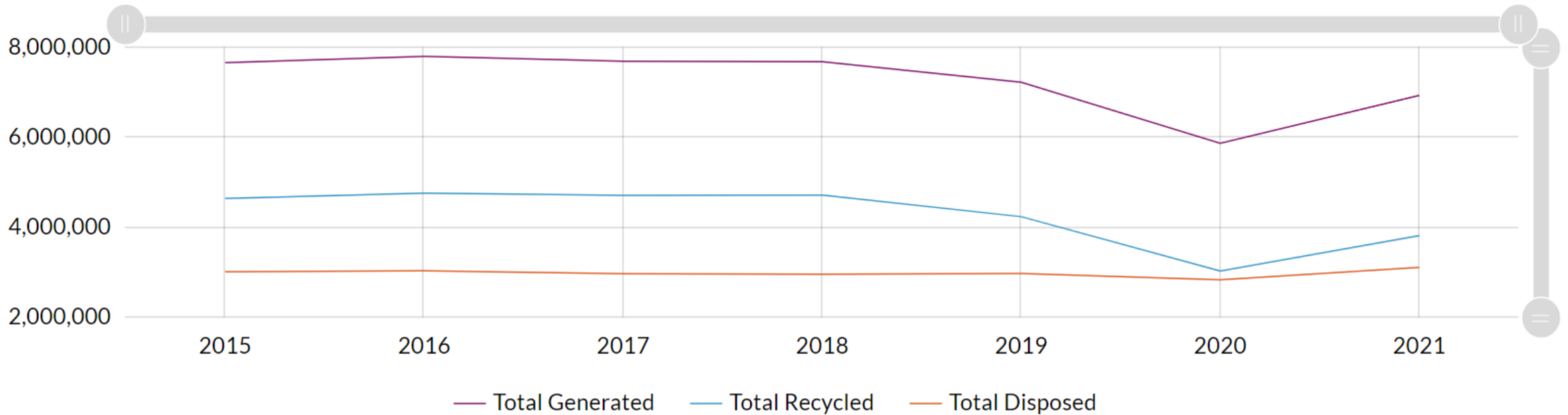
SINGAPORE AIR QUALITY



AIR QUALITY IS GOOD

SINGAPORE SOLID WASTE MANAGEMENT

Waste Management And Overall Recycling Rates

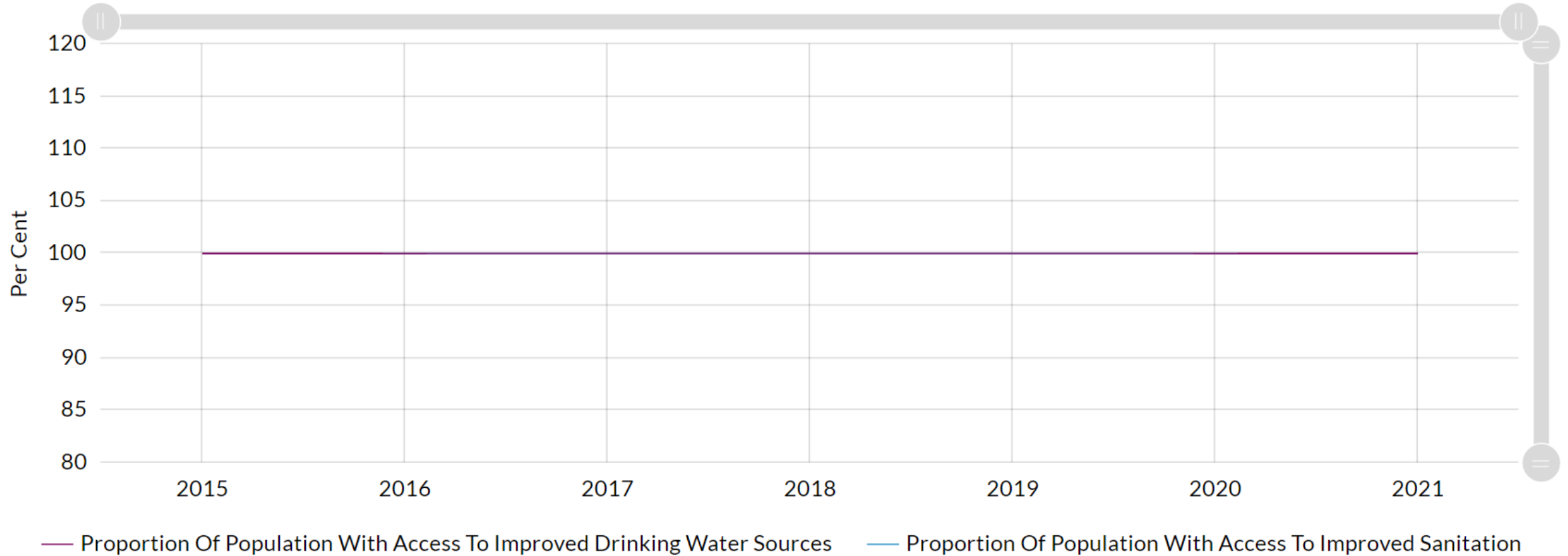


Footnote: In 2019, wood and horticultural wastes recycled include 458,400 tonnes sent to facilities (e.g. biomass power plants) for use as fuel. In 2020, wood and horticultural wastes recycled include 406,000 tonnes sent to facilities (e.g. biomass power plants and Sembcorp's Energy from Waste plant) for use as fuel. The overall recycling rate improved from 52% in 2020 to 55% in 2021. Due to lower construction activity and export market demand for recyclables, the amount of waste recycled was lower in 2021 than pre-COVID-19, especially waste streams such as construction and demolition waste, wood and non-ferrous metals. Data in this table are rounded to the nearest thousand tonnes and percentage point.

3% IMPROVEMENT IN RECYCLING RATE

SINGAPORE WATER & SANITATION

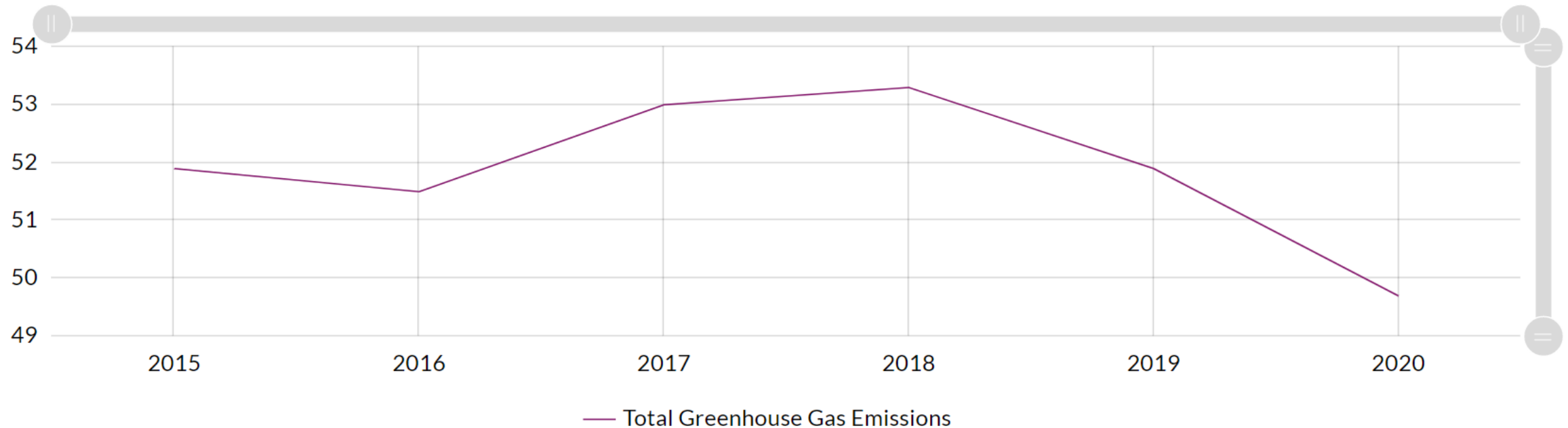
Access To Improved Drinking Water Sources And Sanitation



100% PROVISION FOR WATER & SANITATION

SINGAPORE GREEN HOUSE GAS EMISSION

Greenhouse Gas Emissions By Gas Type



Footnote: Estimated using 2006 Intergovernmental Panel on Climate Change (IPCC) Guidelines for National Greenhouse Gas Inventories and Global Warming Potential values from the IPCC 5th Assessment Report. Figures may be periodically updated as more accurate data (e.g. from the refrigeration and air-conditioning sector) are made available. Figures may not add up to the totals due to rounding. As some figures are considerably small, they may be presented as '0.0' due to rounding.

SIGNIFICANT REDUCTION OF GHG EMISSION

Contents

- 1 OVERVIEW OF ENVIRONMENT & SAFETY
- 2 ECONOMY RE-OPENING AFTER COVID VS WSH PERFORMANCE
- 3 REGULATORY CHANGES
- 4 END

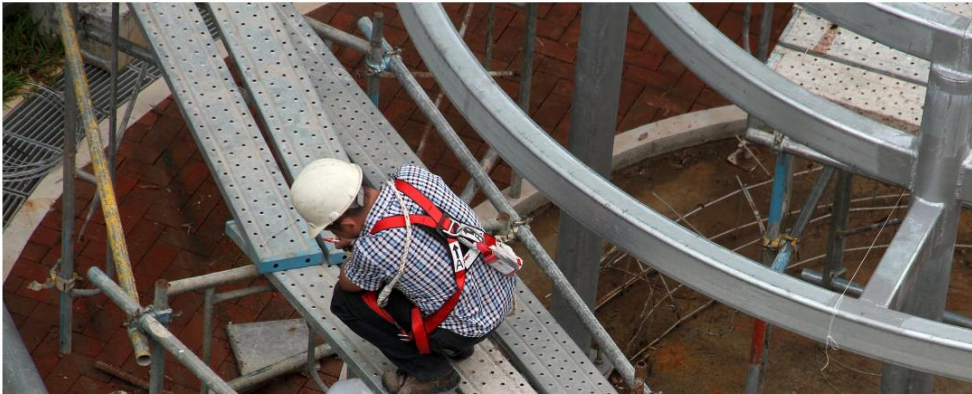
SPATE OF FATALITIES IN SINGAPORE IN 2022

today

Singapore World Minute Big Read Gen Y Speaks Adulting 101 Commentary Voices Watch Brand Spotlight 8 Days

PM Lee says recent spate of workplace deaths 'not acceptable', urges all parties involved to 'put this right'

PM Lee says recent spate of workplace deaths 'not acceptable', urges all parties



SINGAPORE

Cleaner dies after lorry reverses into him in Hougang

Tay Hong Yi

Oct 07, 2022 09:34 pm



A 69-year-old cleaner was killed after a lorry reversed into him at a loading bay at Hougang 1 shopping mall on Wednesday - the 38th workplace death of 2022.

The incident happened at around 9.50am, said the Ministry of Manpower (MOM) on Friday,

Possible Reasons:

Shortage of labour?

Long working hours?

Rush to meet Project deadline?

Multitasking?



SPIKE IN FATAL ACCIDENTS

 NatSteel

MOM DECLARED HEIGHTENED SAFETY PERIOD – 1 September 2022 to 28 February 2023

1. Debarment of company and CEO to take responsibility

Actions that may be taken:

- **Debar** such **companies** from employing new foreign employees for up to three months
- Require **CEOs** to **personally account** to MOM and take responsibility for rectification
- Require companies to **engage external auditors** to conduct a thorough **review** of their **WSH processes**

2. Mandatory safety time-out

What companies must do:

- Conduct a mandatory **safety time-out** (STO)
- Complete the activities in the **safety time-out checklist** from 1 to 15 Sep 2022

MOM WANT INDUSTRY TO TAKE OWNERSHIP OF WSH

ACTION TAKEN AGAINST INDIVIDUAL & COMPANIES IN 2022

Stop-work orders, fines given to 2 companies after unsafe conditions found at worksites



Chew Hui Min
@ChewHuiMinCNA
04 Aug 2022 05:44PM
(Updated: 04 Aug 2022 06:02PM)

THE STRAITS TIMES SINGAPORE

Two firms ordered to stop work and fined over safety breaches



THE STRAITS TIMES SINGAPORE

CEOs and directors face prosecution for workplace safety lapses if they are culpable: Zaqy



CTO Top Stories Latest News Discover Singapore Asia Commentary Sustainability CNA Insider Lifestyle Watch Listen + All Sections

Contractor barred from hiring foreign workers for 3 months after 'serious workplace accident': MOM



Chew Hui Min
@ChewHuiMinCNA
08 Sep 2022 07:26PM
(Updated: 08 Sep 2022 07:26PM)

THE STRAITS TIMES SINGAPORE

Jail for construction site supervisor who ignored safety protocols, leading to worker's death



today Singapore World Minute Big Read Gen Y Speaks Adulting 101 Commentary Voices Watch Brand Spotlight 8 Days

Jail for company director who negligently caused worker's death by using excavator without training



BY ASYRAF KAMIL
Published March 29, 2022
Updated March 29, 2022

CONSEQUENCES OF NEGLIGENCE TO WSH

SAFETY PROMOTION - PROGRAMMES OFFERED BY WSH COUNCIL



Total Workplace Safety and Health Programme



Return to Work Programme



CultureSAFE



StartSAFE



WSH Advocate Programme



bizSAFE

SAFETY PROMOTION - StartSAFE PROGRAMME



StartSAFE is a **free programme** that helps small and medium enterprises (**SMEs**) to identify WSH risks and implement good WSH practices

Who May Apply

You may apply for StartSAFE if you are a **SME**

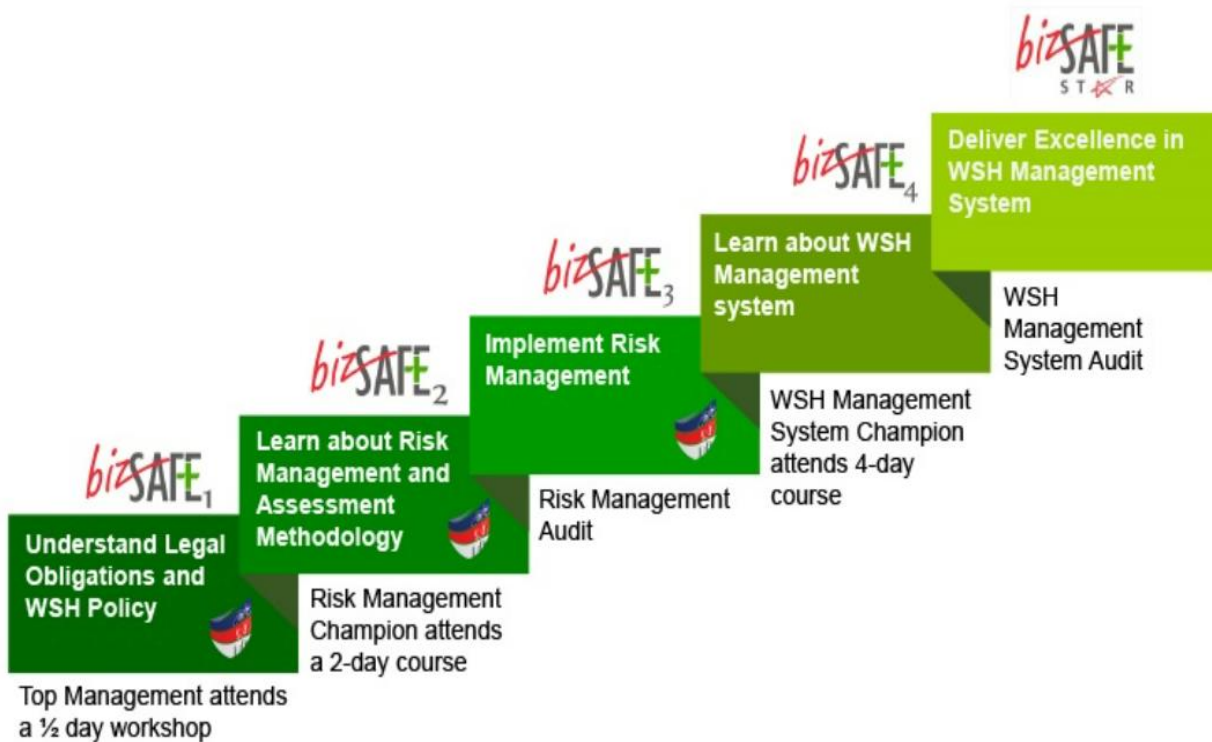
Benefits

Through StartSAFE, **approved WSH professionals** will help you to:

- Understand your **legal obligations** under the Workplace Safety and Health (**WSH**) Act
- Receive **professional advice** and **hands-on guidance** on how to **improve WSH lapses**; and
- Receive a **WSH report** that includes Total WSH **recommendations** to improve your workers' safety and health

SAFETY PROMOTION - bizSAFE PROGRAMME

bizSAFE is a nationally recognised 5-step capability building programme designed to help companies build workplace safety and health capabilities.



Contents

- 1 OVERVIEW OF ENVIRONMENT & SAFETY
- 2 ECONOMY RE-OPENING AFTER COVID VS WSH PERFORMANCE
- 3 REGULATORY CHANGES
- 4 END

ENERGY CONSERVATION ACT – REVISION OF CARBON TAX

National Emissions Target



Achieve net zero emissions by or around mid-century

- Consult industry and citizens to firm up specific net zero year
- Revise Nationally Determined Contribution and Long-Term Low-Emissions Strategy by end-2022

Revised Carbon Tax Levels



- Provide a clear price signal for businesses and individuals to reduce their carbon footprint in line with net zero goal
- Revenue generated to fund support measures for businesses and households in transition to low-carbon future
- Grants available to help companies to build capabilities and decarbonise

WSH ACT: Approved Code of Practice on Chief Executives' and Board of Directors' WSH duties

This Code of Practice aims to provide clarity and strengthen ownership of WSH roles and duties

Four principles in the ACOP:

Company directors can **demonstrate leadership** in improving **WSH performance** and **management** through:

Principle 1

- Ensure WSH is prioritised and have **clarity of roles and responsibilities** of **Chief Executives** and individual **Board of Directors** in leading WSH

Principle 2

- **Walk the talk** in embodying and communicating good WSH standards

Principle 3

- Ensure that **WSH management systems** are effective and **reviewed regularly**

Principle 4

- **Empower workers** to prioritise WSH

WSH ACT – INCIDENT REPORTING

DUTIES TO REPORT

Where an employee meets with an accident at a workplace/ suffers an occupational disease, the employer of that employee shall submit a report to the Commissioner of the accident within 10 days

- Duty to notify and report accident leading to death
- Duty to report accident leading to injury
- Duty to report occupational disease

Before

1. Report if employee dies
2. Given **more than 3 days** of medical leave
3. Hospitalised for **more than 24 hours**
4. Diagnosed with **occupational diseases**

Now

1. Report if employee meet if an accident i.e. certified **unfit to work** or require **hospitalisation** or placed on **light duty**
2. Diagnosed with **occupational diseases**

CHECK SAFE – WSH REPORT CARD FOR COMPANIES



About us

MENU

Workplace safety and health >

Search

CheckSafe - Check company WSH performance

Enhanced on 5 August 2022. Check and compare companies' WSH performance, including injury and enforcement data & past awards. You can make more informed choices of service providers or partners based on their WSH performance.

View the [list of contractors with demerit points](#) in the construction industry.

1 Do you know the name or UEN of the company you wish to search?

Yes, I would like to search by name or UEN of the company

2 Search name or UEN of company

XYZ COMPANY PTE LTD

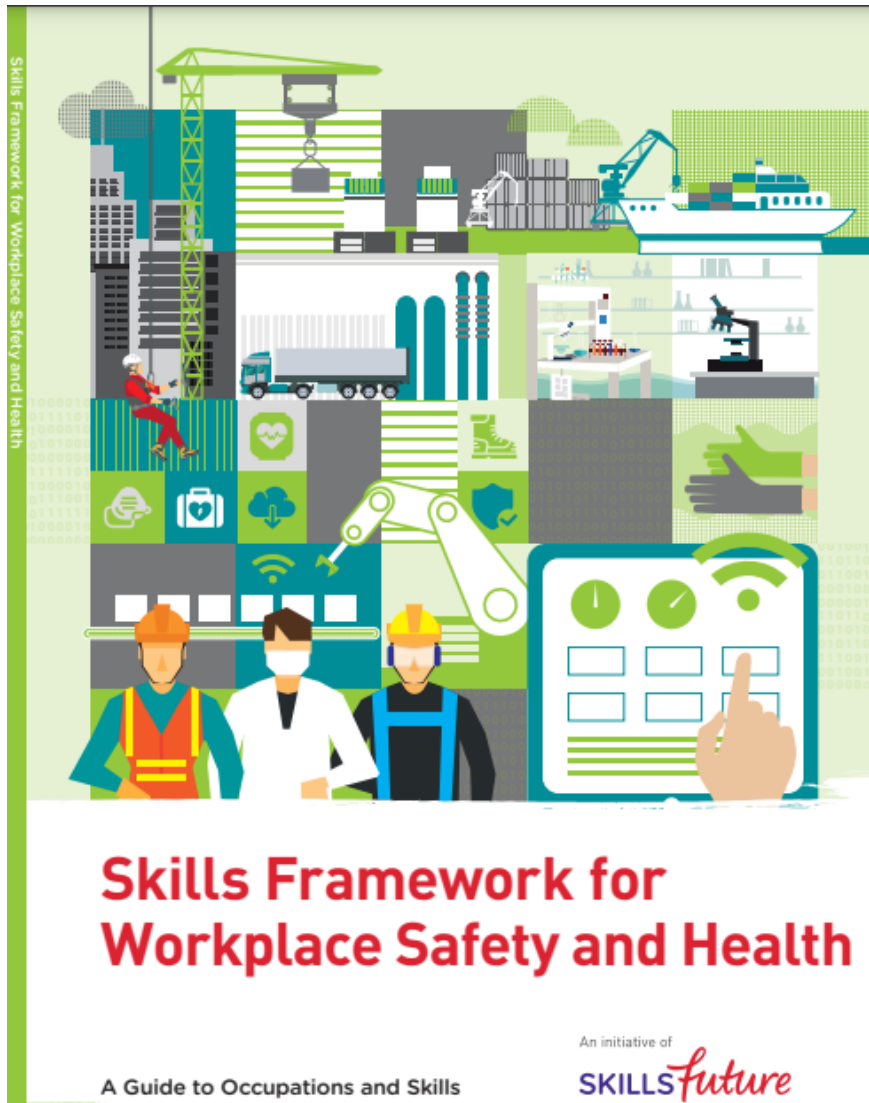
Edit

Results

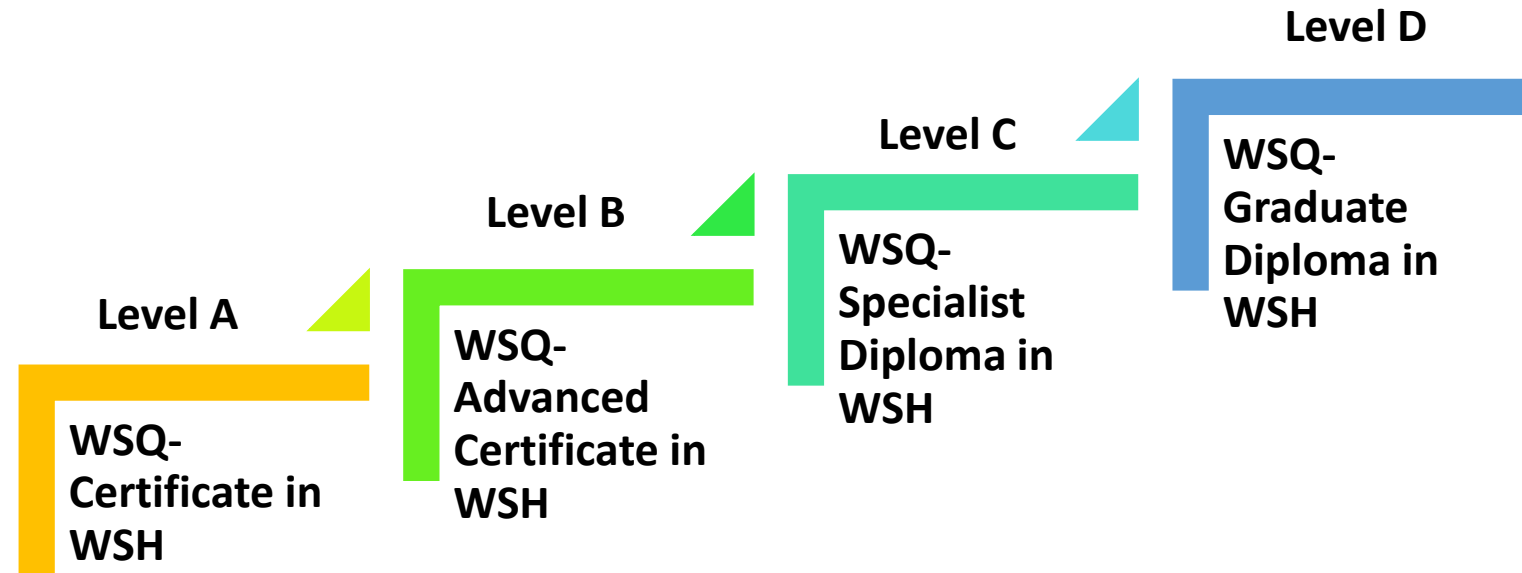
Filters

Company name and UEN	Fatal cases	WIC PI cases	Demerit points	Under SWO	Under BUS	
XYZ COMPANY PTE LTD	2	29	17	No	Yes	
DP debarment phase and period	SWO (issuance/lifting dates, type and status)	Convicted date and offences	bizSAFE type and level			
-	24 Jun 22 - 13 Jul 22 : Partial SWO (Lifted) 28 Feb 22 - 23 Mar 22 : Full SWO (Lifted)	-	bizSAFE PARTNER, bizSAFE ENTERPRISE Level Star			

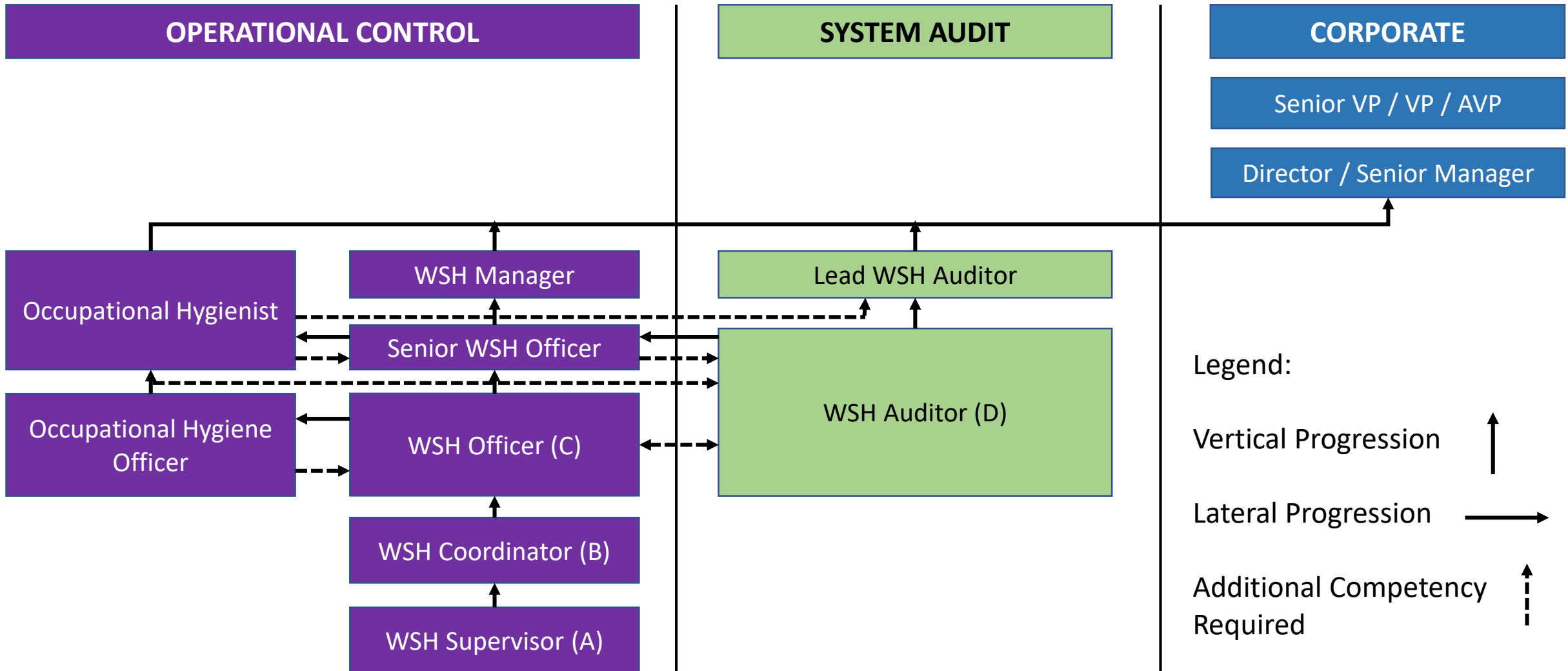
WSH ACT – SKILLS FRAMEWORK FOR WSH PROFESSIONALS



WSH PROFESSIONAL WORKFORCE SKILL QUALIFICATIONS



WSH ACT – SKILLS FRAMEWORK FOR WSH PROFESSIONALS – CAREER PATHWAYS



Thank You!

Disclaimer:

This document (including attachments) is confidential. You should not copy it, forward it or use it for any purpose nor disclose the contents to any person. Opinions, conclusions and other information contained in this message that do not relate to the official business of NatSteel Holdings Pte Ltd shall be understood as neither given nor endorsed by it.

